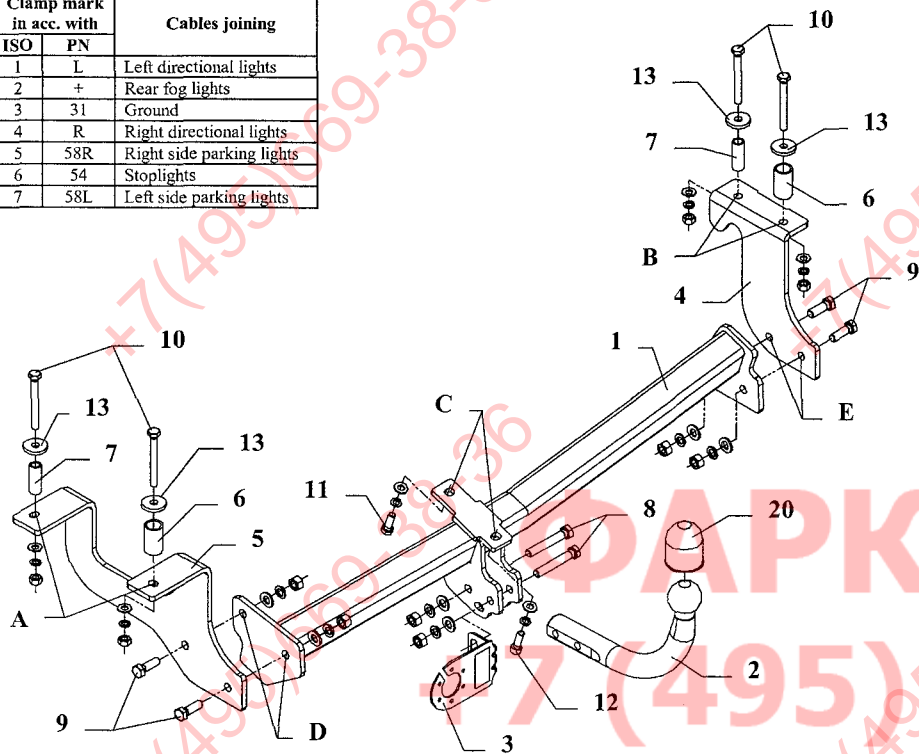


FITTING INSTRUCTION

| Clamp mark in acc. with | | Cables joining |
|-------------------------|-----|---------------------------|
| ISO | PN | |
| 1 | L | Left directional lights |
| 2 | + | Rear fog lights |
| 3 | 31 | Ground |
| 4 | R | Right directional lights |
| 5 | 58R | Right side parking lights |
| 6 | 54 | Stoptlights |
| 7 | 58L | Left side parking lights |



This towbar is designed to assembly in following cars: **SUZUKI WAGON R+, 2+4WD (model 2003)** and **OPEL AGILA, 2+4WD (model 2003)**, produced since 09. 2002 till 2008, catalogue no. **W17** and is prepared to tow trailers max total weight **800 kg** and max vertical load **35 kg**.

From manufacturer

Thank you for buying our product. Their reliability has been confirmed in many tests. Reliability of towbar depends also on correct assembly and right operation. For this reasons we kindly ask to read carefully this instruction and apply to hints.

The towbar should be install in points described by a car producer.

The instruction of the assembly

- For the purpose of installings of the towbar one ought to:
 - take out the rug from the trunk,
 - disassemble plastic covers from the side wall and rear plate,
 - unscrew original towing eye (not used any more),
 - unscrew a handle of petrol line from the left chassis member,
 - remove plastic covers from left and right chassis members,
 - remove plastic covers from luggage part.
- Cut the attached templates, then put them into the trunk on holes according to dimension L=1076mm and mark this points.
- Drill according the drawing using bit $\varnothing 12\text{mm}$, then enlarge it as it is shown on the templates.
- Slide sleeves L=45mm (pos. 6) and L=47mm (pos. 7) to prepared holes.
- Slide brackets (pos. 4 and 5) (left side, from below the car) and fix it through holes (pos. A and B) - loosely.
- Slide the main bar of the towbar (pos. 1) between brackets (pos. 4 and 5) and fix it in the following way:
 - through holes (pos. C) using bolts M10x30mm (pos. 11 and 12) instead original towing eye, as shown on the drawing,
 - through holes (pos. D and E) using bolts M12x35mm (pos. 9) from the towbar accessories.
- Fix tow-ball (pos. 2) and socket plate (pos. 3) using bolts M12x75mm (pos. 8) from accessories.
- Tighten all bolts according to the torque shown in the table.
- Connect electric wires of 7-poles socket according to the instruction of the car. (Recommend to make at authorized service station).
- Complete the paint coating damaged during assembly.

| | |
|---|----------------------|
| Torque settings for nuts and bolts (8,8): | |
| M 8 - 25 Nm | M 10 - 55 Nm |
| M 12 - 85 Nm | M 14 - 135 Nm |

NOTE

After install the towbar you should get adequate note in registration book (at authorised service station). The car should be equipped with:

- Indicators
- Tow mirrors

After 1000km of exploitation check all bolts and nuts. The ball of towbar must be always kept clear and conserve with a grease.

Towbar accessories:

| | | | |
|--|--|--|--|
| Pos. 1 Name: Main bar Quantity: 1 | Pos. 5 Name: Left bracket Quantity: 1 | Pos. 10 Name: Bolt 8,8 B Quantity: 4 Dim.: M10x90mm | Pos. 15 Name: Nut 8 B Quantity: 4 Dim.: M10 |
| Pos. 2 Name: TGV ball Quantity: 1 | Pos. 6 Name: Distance sleeve Quantity: 2 Dim.: Ø26.9x2.9mm L=45mm | Pos. 11 Name: Bolt 8,8 B Quantity: 1 Dim.: M10x30mm | Pos. 16 Name: Plain washer Quantity: 6 Dim.: Ø 13 mm |
| Pos. 3 Name: Socket plate Quantity: 1 | Pos. 7 Name: Distance sleeve Quantity: 2 Dim.: Ø17.2x2.35mm L=47mm | Pos. 12 Name: Imbus bolt Quantity: 1 Dim.: M10x30mm | Pos. 17 Name: Plain washer Quantity: 6 Dim.: Ø 10,5 mm |
| Pos. 4 Name: Right bracket Quantity: 1 | Pos. 8 Name: Bolt 8,8 B Quantity: 2 Dim.: M12x75mm | Pos. 13 Name: Washer Quantity: 4 Dim.: Ø36xØ12x5mm | Pos. 18 Name: Spring washer Quantity: 6 Dim.: Ø 12,2 mm |
| | Pos. 9 Name: Bolt 8,8 B Quantity: 4 Dim.: M12x35mm | Pos. 14 Name: Nut 8 B Quantity: 6 Dim.: M12 | Pos. 19 Name: Spring washer Quantity: 6 Dim.: Ø 10,2 mm |
| | | | Pos. 20 Name: Ball cover Quantity: 1 |



PPUH AUTO-HAK S.J.

Produkcja Zaczepów Kulowych
Henryk & Zbigniew Nejman
76-200 SŁUPSK ul. Słoneczna 16K
tel/fax (059) 8-414-414; 8-414-413
E-mail: office@autohak.com.pl
www.autohak.com.pl

Towing hitch (without electrical set)

Class: A50-X Cat. no. W17

Designed for:

Manufacturer: SUZUKI

Model: WAGON R+

Type: 2+4WD (model 2003)

and

Manufacturer: OPEL

Model: AGILA

Type: 2+4WD (model 2003)

produced since 09.2002 till 2008

Approval number acc. to regulations EKG/ONZ 55.01: **E20-55R-01 0785**

Technical data:

D-value: **5,07 kN**

maximum trailer weight: **800 kg**

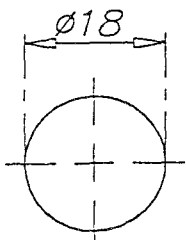
maximum vertical cup load: **35 kg**

Foreword

This towbar is designed according to rules of safety traffic regulations. The towing hitch is a safety component and can be installed only by qualified personnel. Any alteration or conversion of the towing hitch is prohibited and would lead to cancellation of design certification. Remove insulating compound and underseal from vehicle (if present) in the area of the matting surfaces of the towing hitch. The vehicle manufacturer's specifications regarding trailer load and max. vertical cup load are decisive for driving whereat values for the towing hitch cannot be exceeded.

D-value formula:

$$\frac{\text{Max trailer weight [kg]} \times \text{Max vehicle weight [kg]} \times \frac{9,81}{1000}}{\text{Max trailer weight [kg]} + \text{Max vehicle weight [kg]}} = D \text{ [kN]}$$



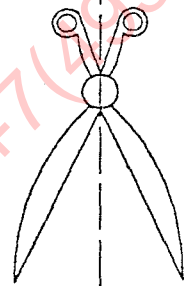
A

Attention:
Cut the place signed :



Points A,B, C, D first sign then drill

Left



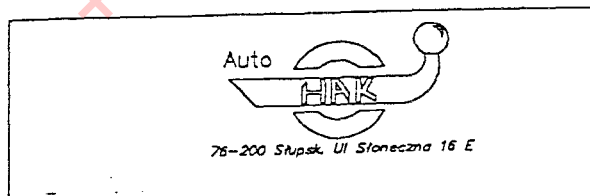
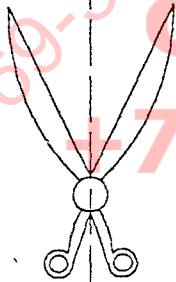
Right

Position of the holes
L=1076 mm

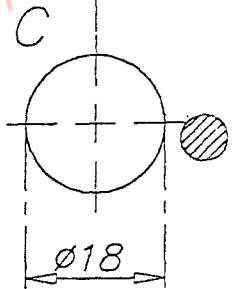
It is the real dimension in the car

ФАРКОП.РФ

+7 (495) 669-38-36

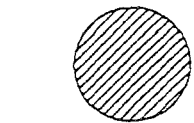


Suzuki Wagon R+ 2+4 WD, model 2003
Opel Agila 2+4 WD, model 2003

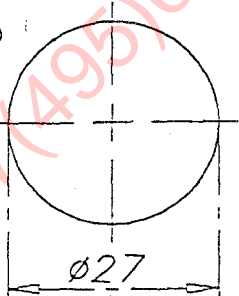


C

18

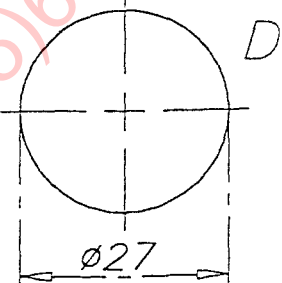
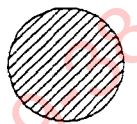
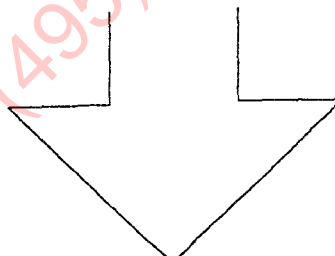


B



27

The rear bumper of the car



D

27